



MODEL 555

CARE CHAIR

(TILT IN SPACE)

MANUAL



1959 Church Creek Road / Cambridge, MD 21613 P: (410) 228-1156 / (800) 866-1156 F: (410) 228-6403
www.camtecproducts.com info@camtecproducts.com

REV A 1/19/07 510555-0, 555 MANUAL 4/3/06

TABLE OF CONTENTS

Cautions and Warnings	3
Introduction	4
Receiving Instructions	4
Specifications	5
Operation Instructions	
Chair	6
Accessories	7
Inspection and Maintenance	8
Trouble Shooting the Electrical System	9
Wiring Diagram	10
Parts Manual	11 - 20

CAUTIONS AND WARNINGS

- CAUTION:** ROTATING PARTS. KEEP FINGERS AND ARMS CLEAR OF CHAIRS MOVING PARTS WHEN MECHANISM IS OPERATING.
- CAUTION:** PINCH POINT. KEEP OBJECTS AWAY FROM THESE AREAS WHILE CHAIR IS IN MOTION.
- CAUTION:** KEEP FEET CLEAR OF CASTERS. MAKE SURE CASTORS ARE LOCKED BEFORE TRANSFERRING PATIENT.
- CAUTION:** USE THE TILT FUNCTION TO LEVEL THE ARM REST BEFORE GOING INTO THE TRANSFER (STRETCHER) POSITION.
- CAUTION:** MAKE SURE THAT THE PENDANT CORD, IF APPLICABLE, IS PROPERLY POSITIONED BEFORE OPERATING THE CHAIR. DO NOT ALLOW CORD TO GET CAUGHT IN THE MOVING PARTS OF THE CHAIR.
- CAUTION:** MAKE SURE I.V. ROD AND OXYGEN TANK ARE FULLY INSERTED INTO THEIR HOLDERS.
- CAUTION:** MAKE SURE THE BATTERY CHARGER IS UNPLUGGED BEFORE MOVING CHAIR.
- WARNING:** DO NOT PLACE ANY BODY PARTS INTO FRAME WHILE OPERATING. STAND CLEAR OF THE CHAIRS FRAME BEFORE OPERATING.

INTRODUCTION

The Camtec Model 555 TILT - N - SPACE CARE CHAIR has been designed primarily for use in hospitals and other institutions to support patients whose weight exceeds the limit of conventional chairs and who may require special positioning.

The welded tubular frame has a 24" seat width and is designed to support a safe working load of 400 lbs.

The chair adjusts from a full upright sitting position to a full stretcher position. The chair tilts back to redistribute the patients weight aiding in comfort and pressure relief. The chair also tilts forward to assists in patients egress. When in the supine position the patient can receive treatment, emergency care, or be more easily transferred from the chair to a bed. While in the stretcher mode the chair has the ability to go into the trendelenburg position.

The chair is equipped with a central steering and locking system which provides convenient, one step access to the steering and total lock functions. The 6" swivel casters allow for easy chair movement to facilitate patient transport.

RECEIVING INSTRUCTIONS

The chair and accessories may be shipped to you on a pallet. Before opening this container, visually inspect the package for any signs of freight damage. If damage is detected, do not accept the shipment without making a notation on the shipping invoice, briefly describing the damage, and file a damage claim with the freight company.

Carefully remove the chair and the associated parts from the packaging. Inspect all parts to make sure there is no internal damage. If internal damage is noticed, contact the freight company immediately to file a damage claim report.

Carefully open all packing and verify that all components on the packing slip have been received. If anything is missing, notify the dealer from whom you obtained the chair.

**ALL ITEMS RECEIVED SHOULD BE CHECKED AGAINST THE
PACKING SLIP TO VERIFY THAT YOU HAVE RECEIVED ALL
COMPONENTS IN GOOD CONDITION.**

SPECIFICATIONS

Weight Capacity	400 lbs.
Seat Width	24 inches
Overall Width	32 inches
<u>Seat Height Above Floor</u>	
Chair Position	24 inches
Stretcher Position	30 inches
<u>Arm Rest (side rail) Height Above Seat</u>	
Chair Position	7-18 inches
Stretcher Position	1-10 inches
<u>Recline Positioning</u>	Electrically driven - infinite
<u>Battery</u>	12 volt rechargeable sealed Battery, good for approximately 75 cycles. Recharge time - 12 hours
<u>Foot Rest</u>	Adjustable individually, manual
<u>Leg Rest</u>	Adjustable individually, manual and affected by other position changes.
<u>Casters</u>	Diameter: 6" Width: 3" Operated by central steer/ lock system Tread Guards: Non-marring
<u>Options</u>	Pendant Oxygen Tank Holder Captive IV Rod and Holder (adjustable height) Tray Commode Seat
<u>Shipping Weight</u>	Approximately 300 lbs. (plus accessories)
<u>Warranty</u>	5 years workmanship and materials 1 year electrical system

OPERATION INSTRUCTIONS

WHENEVER MAKING ADJUSTMENTS TO THE CARE CHAIR, THE BRAKES MUST BE ON!

CAUTION: WHEN ADJUSTING POSITION OF BACK, EXERCISE CAUTION THAT PATIENT ARMS ARE INSIDE ARM RESTS

POSITION ADJUSTMENT

LOCK THE WHEELS BEFORE CHANGING THE CHAIR POSITION

THE ELECTRICALLY CONTROLLED CARE CHAIR HAS THREE CONTROLS.

1. THE POWER BOX UNDERNEATH THE MAIN FRAME HAS A RED HANDLE CIRCUIT BREAKER MOUNTED ON THE SIDE OF THE BOX. THIS HANDLE MUST BE IN THE ON (UP) POSITION FOR THE UNIT TO OPERATE. (SEE FIG. 1)

2. THE UNIT MAY BE CONVERTED TO THE STRETCHER POSITION (HORIZONTAL) BY PUSHING DOWN ON THE TOP TOGGLE SWITCH HANDLE LOCATED ON THE BACK FRAME NEAR THE MAIN HANDLE. (SEE FIG. 2)

3. THERE IS A SLIGHT DELAY BETWEEN THE TIME THE SWITCH IS ACTIVATED AND THE BACK MOVES. THIS IS NORMAL AND SHOULD CAUSE NO CONCERN.

4. THE UNIT MAY BE CONVERTED BACK TO THE CHAIR POSITION BY PUSHING UP ON THE TOP TOGGLE SWITCH HANDLE. (SEE FIG. 2)

5. THE LOWER TOGGLE SWITCH (SEE FIG 2) TILTS THE CHAIR. PUSHING DOWN ON THE TOGGLE SWITCH TILTS THE CHAIR BACK. PUSHING UP ON THE TOGGLE SWITCH TILTS THE CHAIR FORWARD.

6. WHEN THE ELECTRIC ACTUATORS REACH THEIR LIMIT IN EITHER THEIR UP OR DOWN POSITION, A MECHANICAL RATCHETING NOISE WILL BE HEARD. THIS IS NORMAL AND INDICATES THE TRAVEL LIMIT.

7. BATTERY CHARGER - A FULLY CHARGED BATTERY WILL SUPPORT IN EXCESS OF 75 COMPLETE CYCLES OF THE OPERATION OF THE CARE CHAIR. WHEN THE OPERATION OF THE CARE CHAIR SLOWS DOWN IT IS TIME TO CHARGE THE BATTERY. PLUG THE SUPPLIED CHARGER INTO A 120 VAC WALL SOCKET. ABOUT 12 HOURS OF CHARGING WILL NORMALLY FULLY CHARGE THE BATTERY.

A GOOD OPERATING PROCEDURE IS TO CHARGE THE UNIT WHEN NOT IN USE. YOU CANNOT OVERCHARGE THE SYSTEM BY LEAVING THE CHARGER PLUGGED INTO THE UNIT.

BATTERY CHARGER PLUG

(SEE FIG. 4)

1. INSERT THE BATTERY CHARGER PLUG INTO THE SOCKET BETWEEN THE TWO TOGGLE SWITCHES ON THE BACK OF THE CHAIR - LEFT SIDE.

2. PLUG THE CHARGER INTO A WALL OUTLET (110 VOLT) TO CHARGE THE CHAIR BATTERY.

LEG REST LENGTH ADJUSTMENT

(SEE FIG. 5)

1. HOLD FOOT REST.
2. SWING AND HOLD LOCKING BAR.
3. MOVE FOOT REST TO DESIRED LENGTH.
4. RELEASE LOCKING BAR AND MOVE FOOT REST SLIGHTLY UNTIL PIN SNAPS INTO LOCKING HOLE.

LEG REST HEIGHT ADJUSTMENT

(SEE FIG. 6)

- TO RAISE:**
1. MOVE LEVER TO LOCK POSITION.
 2. MOVE LEG REST UP TO DESIRED HEIGHT. (LEG REST WILL AUTOMATICALLY LOCK INTO DESIRED POSITION)

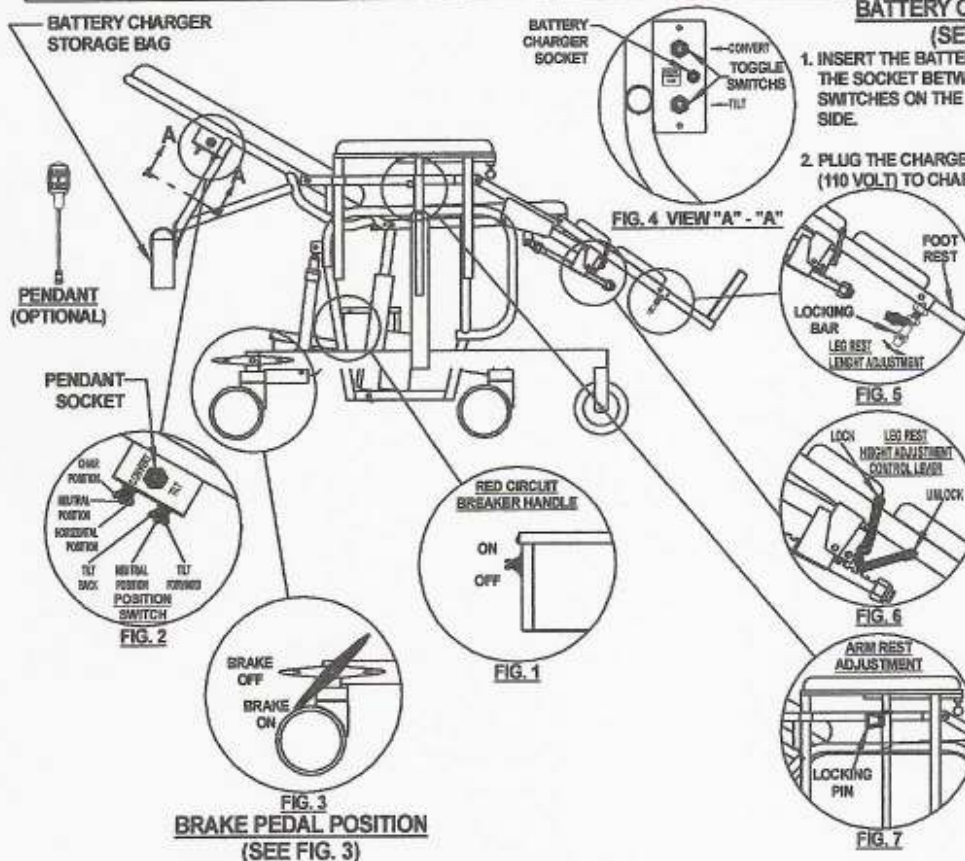
TO LOWER:

1. RAISE LEG REST SLIGHTLY AND HOLD.
2. MOVE LEVER TO UNLOCK POSITION.
3. LOWER LEG REST.

ARM REST ADJUSTMENT

(SEE FIG. 7)

1. GRASP ARM REST IN CENTER DIRECTLY ABOVE VERTICAL SQUARE TUBING.
2. PULL SPRING LOADED LOCKING PIN TOWARD HEAD-END.
3. MOVE ARM REST TO DESIRED HEIGHT.
4. RELEASE PIN AND MOVE ARM REST SLIGHTLY UP OR DOWN UNTIL PIN SNAPS INTO LOCKING HOLE.



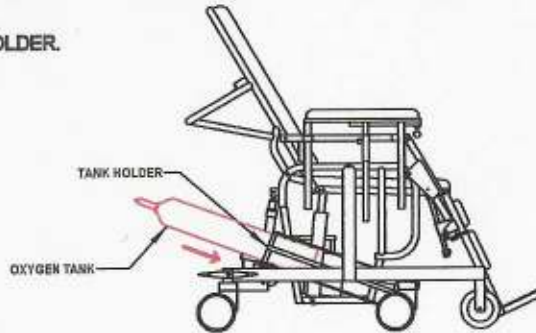
1. BRAKE ON ...
ALL (4) WHEELS LOCKED FROM ROLLING AND SWIVELING.
2. BRAKE OFF ...
ALL (4) WHEELS UNLOCKED FREE TO ROLL AND SWIVEL.

ACCESSORIES OPERATION INSTRUCTIONS

INSTRUCTIONS FOR USE OF CAMTEC CARE CHAIR ACCESSORIES

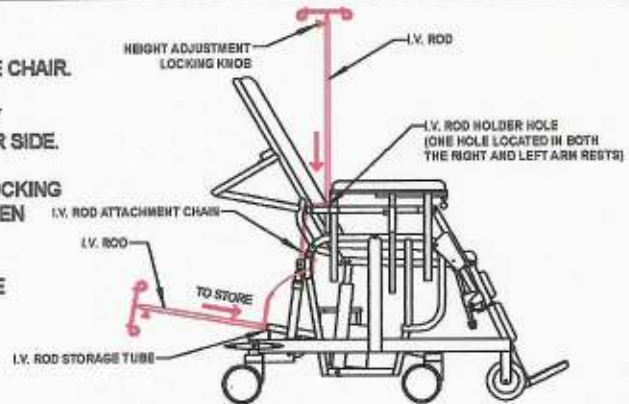
OXYGEN TANK HOLDER

INSERT OXYGEN TANK INTO HOLDER.



I.V. ROD & ASSEMBLY

- 1- THE I.V. ROD IS ATTACHED BY CHAIN TO THE BACK OF THE CHAIR.
- 2- THE ROD CAN BE USED ON EITHER SIDE OF THE CHAIR BY INSERTING IT INTO THE HOLE IN THE ARM REST ON EITHER SIDE.
- 3- TO ADJUST THE HEIGHT OF THE I.V. POLE LOOSEN THE LOCKING KNOB AND EXTEND THE ROD TO THE DESIRED HEIGHT, THEN TIGHTEN THE LOCKING KNOB.
- 4- WHEN NOT IN USE COLLAPSE THE ROD AND STORE IN THE STORAGE TUBE UNDER THE CHAIR.

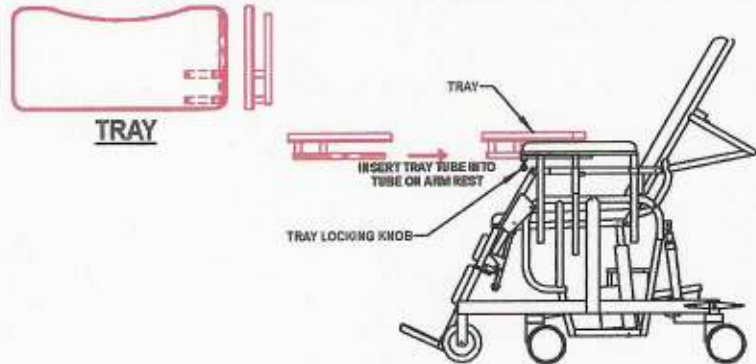


PATIENT TRAY

- 1- INSERT TUBE ON TRAY INTO TUBE ON THE LEFT HAND ARM REST.
- 2- WHEN TRAY IS IN PLACE TIGHTEN TRAY LOCKING KNOB.

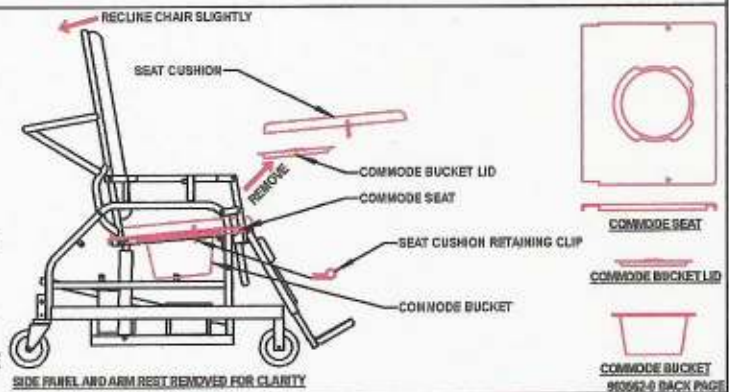
NOTE:

THE TRAY CANNOT BE USED AS A RESTRAINT.



COMMODOE SEAT ASSEMBLY

- 1- REMOVE SEAT CUSHION RETAINER CLIPS FROM UNDER SEAT.
- 2- LIFT SEAT CUSHION AND REMOVE FROM CHAIR. (RECLINE CHAIR SLIGHTLY TO ASSIST IN EASY REMOVAL)
- 3- REMOVE COMMODOE BUCKET LID AND PLACE PATIENT IN CHAIR.
- 4- REMOVE, EMPTY AND CLEAN COMMODOE BUCKET.
- 5- REPLACE BUCKET, LID, AND SEAT CUSHION. REPLACE SEAT CUSHION RETAINING CLIPS.



INSPECTION AND MAINTENANCE

Periodic Inspection

- 1 – Check for any loose threaded fittings.**
- 2 – Check for torn or soiled upholstery.**
- 3 – Check for freedom of motion at all pivot points.**
- 4 – Check for freedom of motion of all casters, rolling and swivel.**
- 5 – Check for tightness of caster brakes with brake lever ON.**
- 6 – Check for proper operation of steering lock caster on right front.**

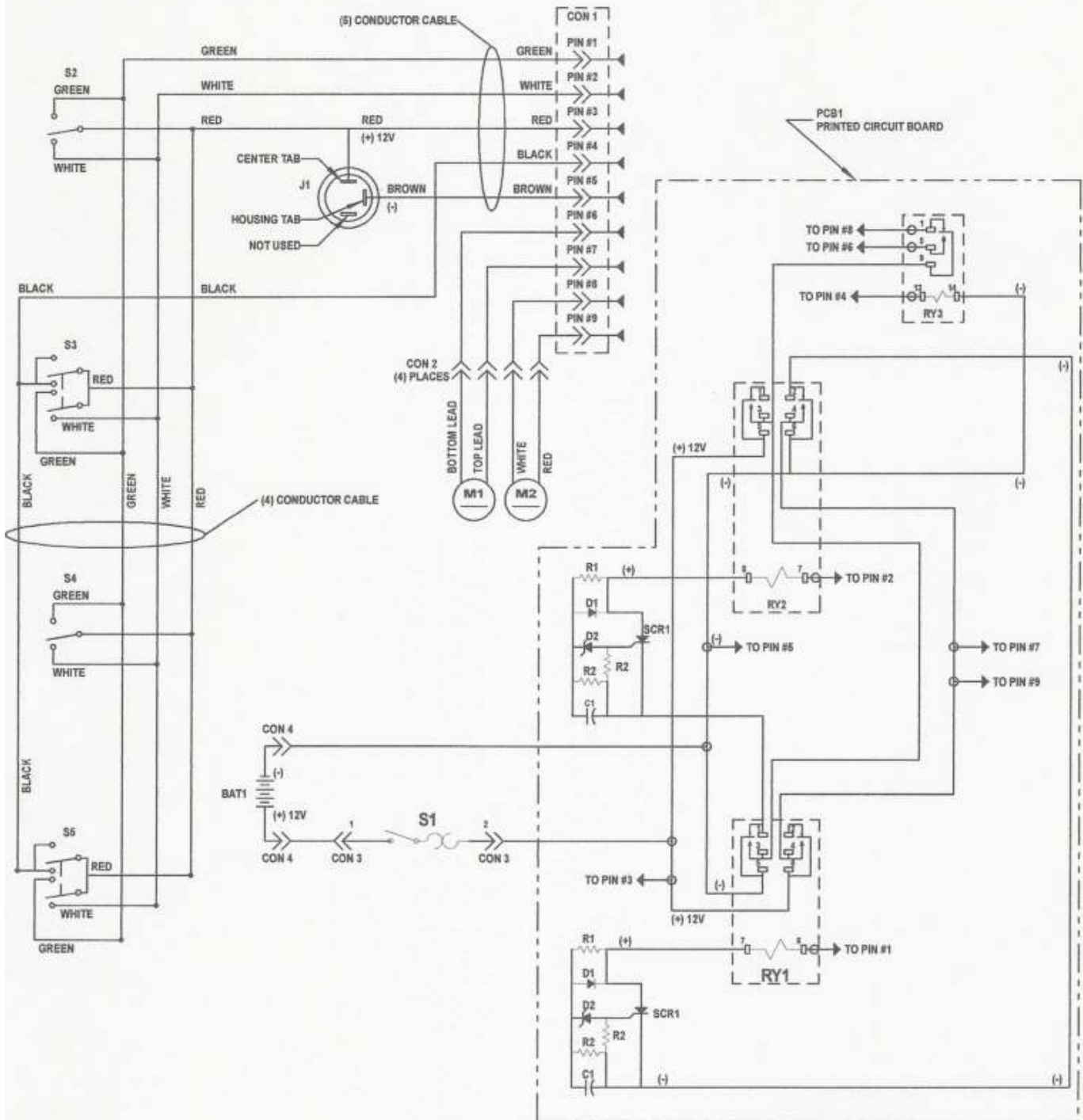
Maintenance

- 1 – Correct any problems discovered during the inspection.**
- 2 – If any threaded components are found loose, tighten after applying Loctite.**
- 3 – Lubricate all pivot points with one drop of light machine oil at each point.**

TROUBLE SHOOTING THE ELECTRICAL SYSTEM

PROBLEM	POSSIBLE SOLUTION	SUGGESTED REMEDIES
Activating Tilt Switch results in no action.	Circuit Breaker Switch on Battery Box Not ON (up)	Turn Switch On
	Dead Battery	Recharge Battery
	Defective Battery	Replace Battery
	Loose Wires	Check wiring in Battery Box, especially between battery, Circuit Breaker and Circuit Board.
	Defective Circuit Board	Replace Battery box
	Loose wiring at switches	Correct defective wiring
Activating Tilt Switch causes a click noise in Battery Box but no motor action.	Defective wiring between Battery Box and motor	Replace defective wiring.
	Defective motor	Check motor-Disconnect and remove battery. Apply 12 VDC to motor. Reversing 12 VDC polarity will reverse motor direction. (Note: a loud clicking at the end of the actuator shaft travel is normal. This is a slip clutch). If motor does not run in both directions, replace motor.
Slight delay between actuation of switch and motor start.	Normal	This delay is normal and prevents sudden reversal of the motor with sudden switch reversal
Light does not indicate charging when charger is plugged into 12 V AC and the Care Chair.	Circuit Breaker Switch is not ON	Turn Breaker ON
	Check the outlet that the charger is plugged into.	Check the circuit breaker that controls the outlet.
	Check wiring between charger and Care Chair	Repair defective wiring.
	Charger is defective	Replace charger.
Charger is plugged into power source and Care Chair Activating tilt switch causes relay chattering sound in Battery Box.	Circuit Breaker is not ON. Motor is trying to run off charger.	Turn Circuit Breaker ON.
Both Switches do not work in all positions but, incorporating the use of both switches at the same time the motor will run both ways.	Defective switches.	Replace switches.
Motor will run in one direction only.	Defective relay in battery box.	Interchange relays in battery box (Plug In Relays). If problem follows relay replace defective relay

WIRING DIAGRAM

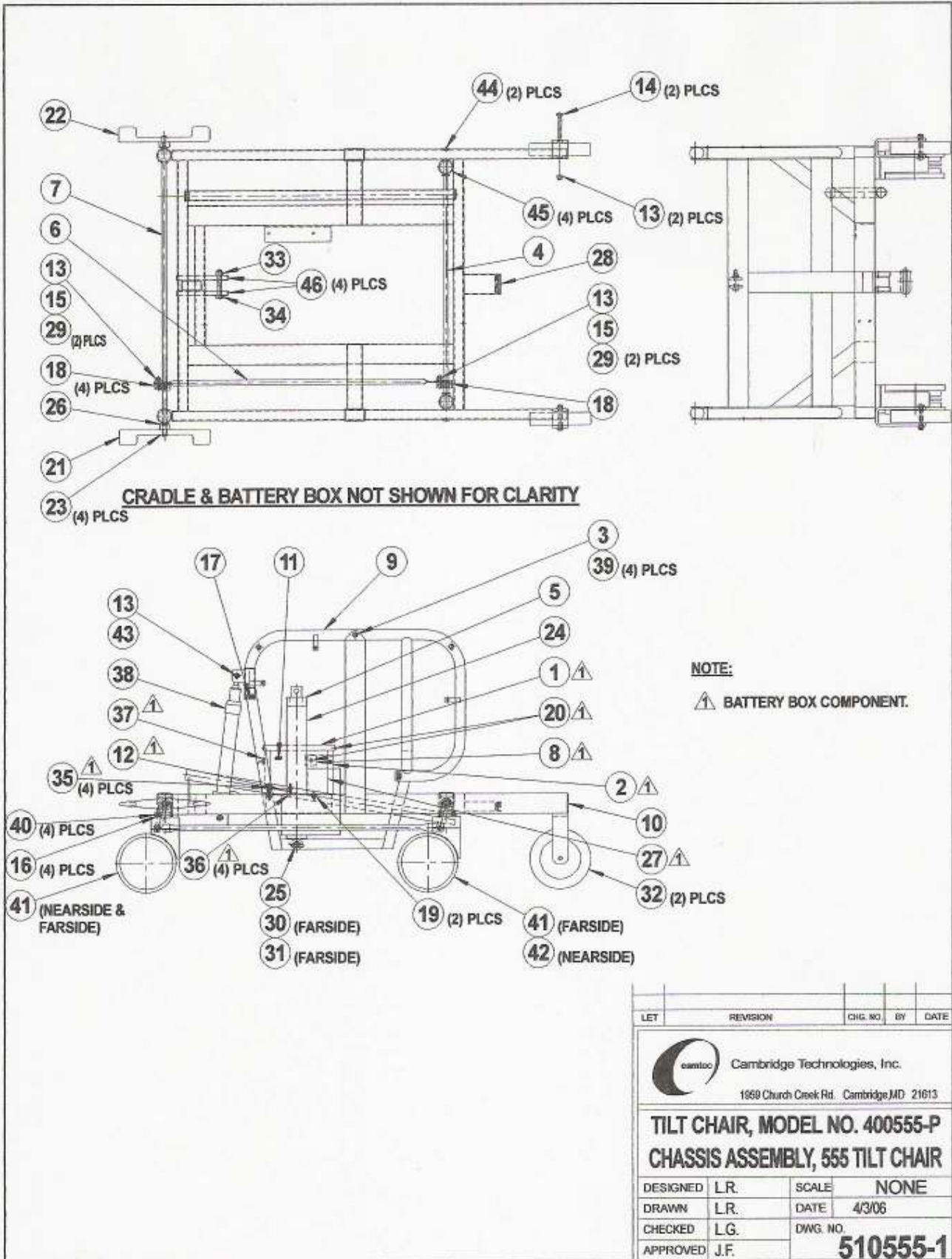


**TILT CHAIR, 24" ELECTRICAL
MODEL NO. 400555-P
DRAWING LIST**

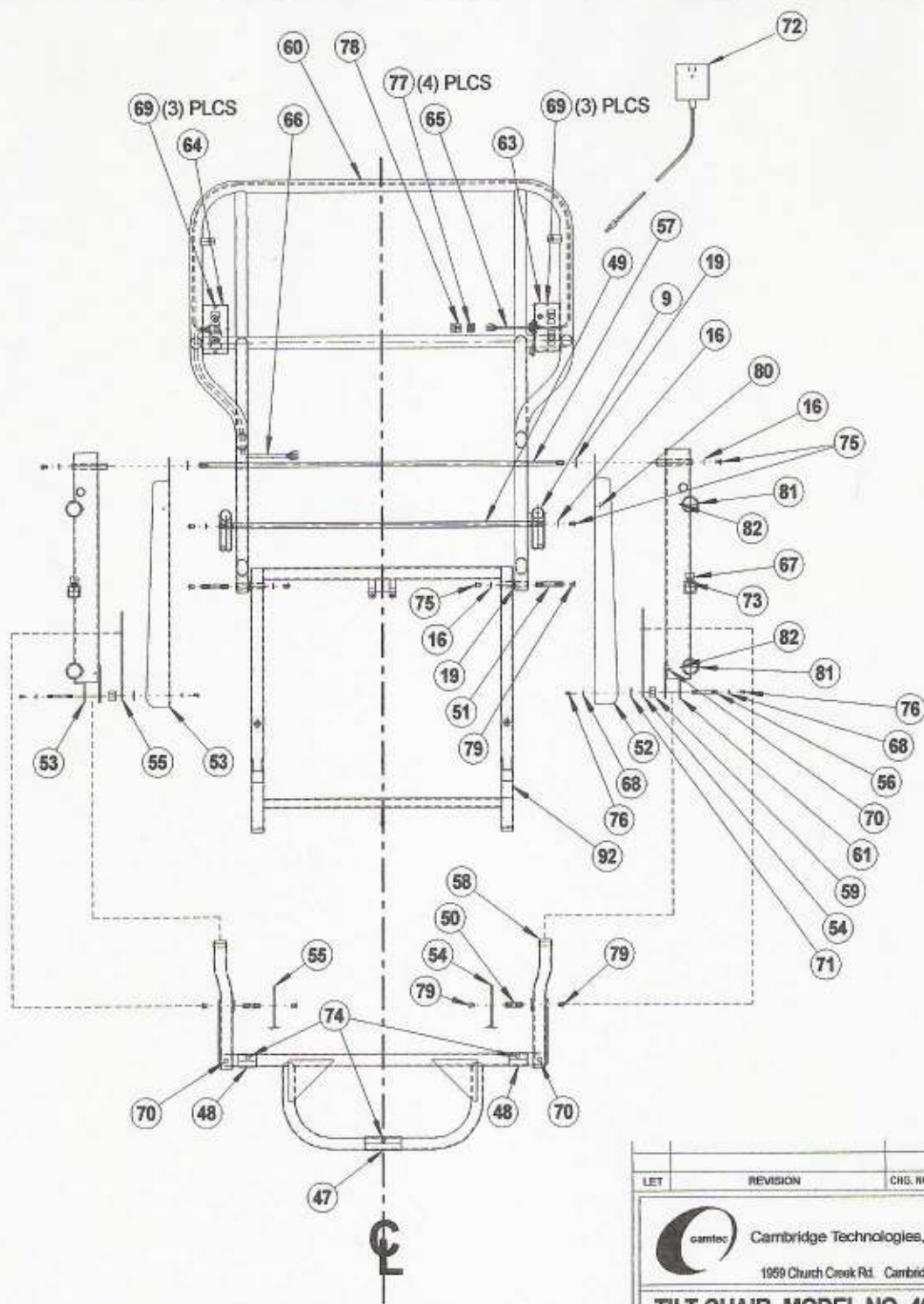
DWG. NO.	DESCRIPTION
510555-1	CHASSIS ASSEMBLY DRAWING
510555-2	BACK & ARM ASSEMBLY DRAWING
510555-3	SEAT & LEG ASSEMBLY DRAWING
510555-4	ARM SUPPORT & CUSHION ASSEMBLY DRAWING
510555-5	PARTS LIST SHEET 1 OF 5
510555-6	PARTS LIST SHEET 2 OF 5
510555-7	PARTS LIST SHEET 3 OF 5
510555-8	PARTS LIST SHEET 4 OF 5
510555-9	PARTS LIST SHEET 5 OF 5

510555-0

PARTS MANUAL



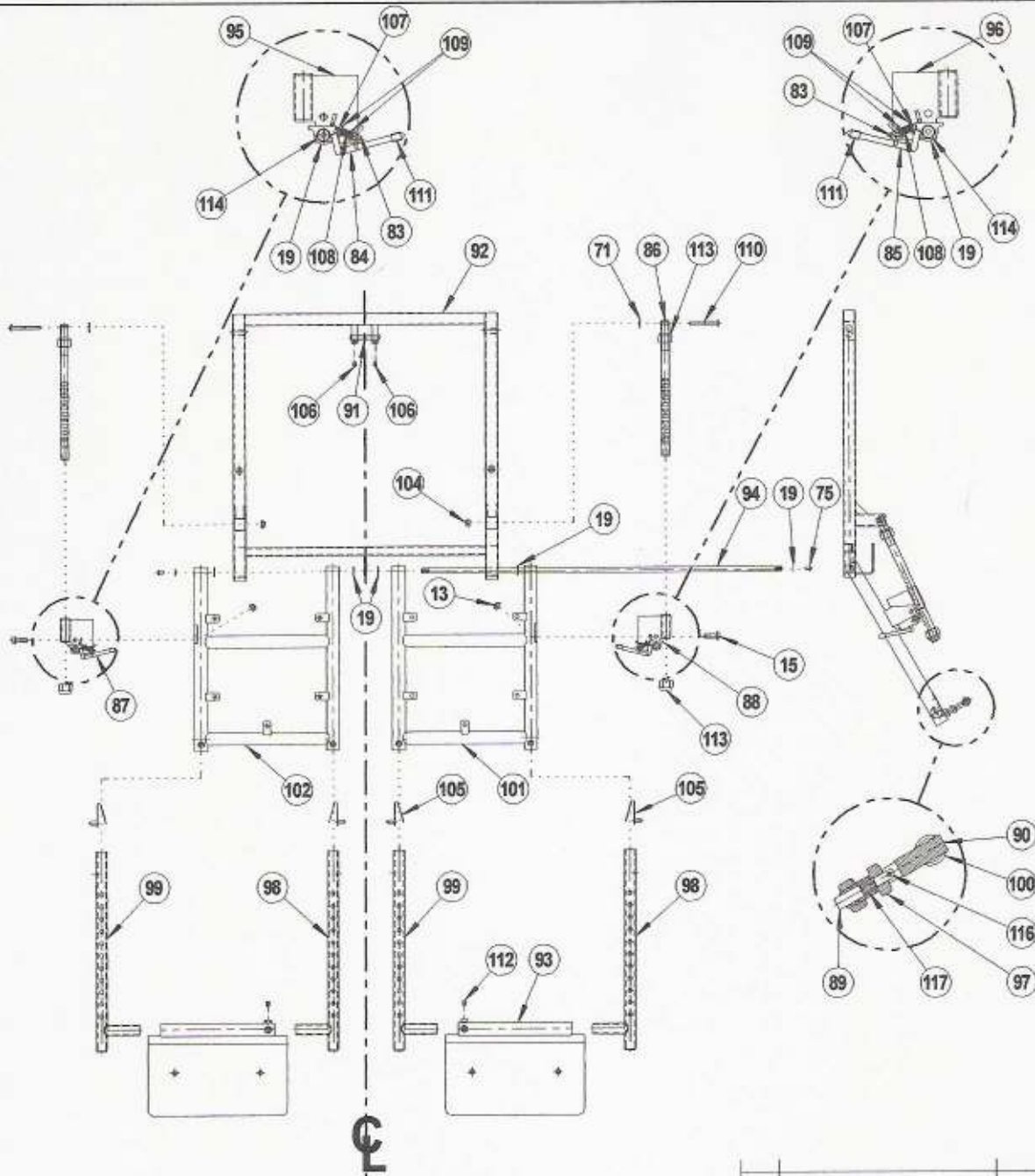
PARTS MANUAL



SYMETRICAL ABOUT C
UNLESS OTHERWISE SPECIFIED

LET	REVISION	CHG. NO.	BY	DATE
 Cambridge Technologies, Inc. 1999 Church Creek Rd. Cambridge, MD 21813				
TILT CHAIR, MODEL NO. 400555-P BACK AND ARM ASS'Y, 555 TILT CHAIR				
DESIGNED	L.R.	SCALE	NONE	
DRAWN	L.R.	DATE	4/3/06	
CHECKED	L.G.	DWG. NO.	510555-2	
APPROVED	J.F.			

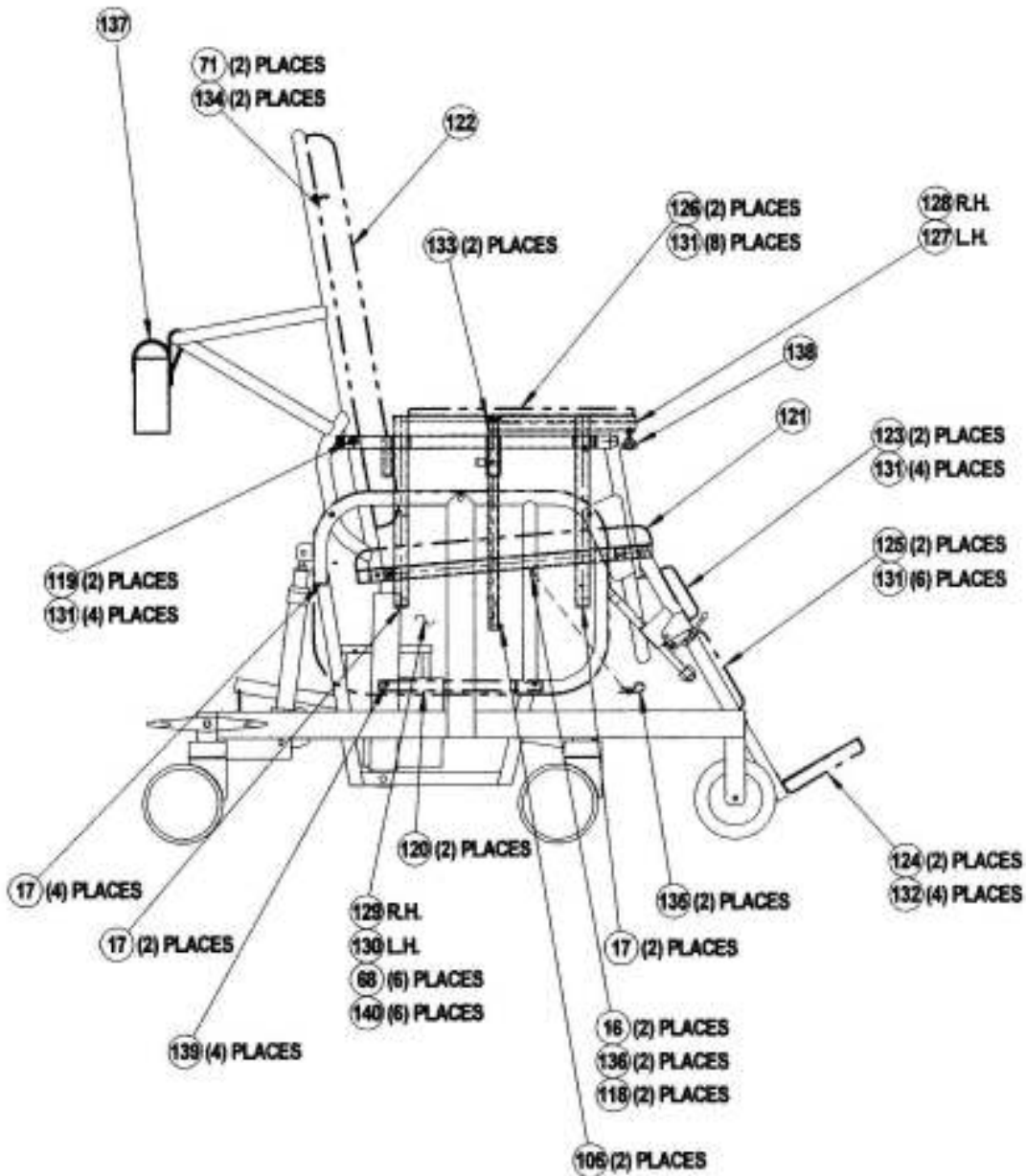
PARTS MANUAL



SYMETRICAL ABOUT C
UNLESS OTHERWISE SPECIFIED

LET	REVISION	CHG. NO.	BY	DATE
 Cambridge Technologies, Inc. 1959 Church Creek Rd. Cambridge, MD 21613				
TILT CHAIR, MODEL NO. 400555-P SEAT AND LEG ASS'Y, 555 TILT CHAIR				
DESIGNED	L.R.	SCALE	NONE	
DRAWN	L.R.	DATE	4/3/06	
CHECKED	L.G.	DWG. NO.	510555-3	
APPROVED	J.F.			

PARTS MANUAL



NOTE:

CALL FACTORY FOR AVAILABLE COLORS

A	CHANGED TO CHURCH CREEK FORMAT; REMOVED COLOR SELECTION CHART	1275	L.R.	1/11/97
LET	REVISION	CHG. NO.	BY	DATE



Cambridge Technologies, Inc.

1956 Church Creek Rd. Cambridge, MD 21613

TILT CHAIR, MODEL NO. 400555-P
ARM SUPPORT & CUSHION ASSY, 555 TILT CHAIR

DESIGNED	L.R.	SCALE	NONE
DRAWN	L.R.	DATE	4/3/06
CHECKED	L.G.	DWG. NO.	
APPROVED	J.F.		510555-4

PARTS MANUAL

TILT CHAIR, 24" ELECTRICAL MODEL NO. 400555-P PARTS LIST

ITEM	PART NO.	DESCRIPTION
1	100945-0	BATTERY BOX COVER
2	100947-0	BATTERY BOX ENCLOSURE
3	102652-0	PIN, PIVOT, TILT CHAIR, 1.136" LG.
4	104308-0	ROD, CASTER BRAKE FRONT
5	102781-0	SPACER, ACTUATOR
6	103311-P	ROD, CONNECTING LEVER
7	104307-0	ROD, CASTER BRAKE, REAR
8	105063-0	BATTERY BOX BRACKET
9	200708-0	WELDMENT, CRADLE
10	200710-0	WELDMENT, CHASSIS 555 TILT CHAIR
11	300137-0	ASSEMBLY, BATTERY BOX, TILT CHAIR
12	300139-0	PC BOARD, TILT CHAIR
13	900045-0	NUT, 5/16-18, HEX, ESNA
14	900063-0	BOLT, HEX, 5/16-18 X 2-1/4" LG.
15	900076-0	BOLT, HEX, 5/16-18 X 1" LG.
16	900085-0	WASHER, LOCK, 1/4" INTERNAL TOOTH
17	900087-1	CAPLUG, 1" BLACK PLASTIC
18	900122-1	LEVER, XMISSION
19	900326-0	NUT, #10-32, HEX, ESNA
20	900328-0	SCREW, #10-32 X 1/4" LG. PAN HEAD PHILLIPS, SS
21	900355-1	FOOT BRAKE PEDAL, DOUBLE LEVER, RH
22	900355-2	FOOT BRAKE PEDAL, DOUBLE LEVER, LH
23	900358-0	RETAINING RING
24	900365-0	ELECTRIC ACTUATOR (TRANSFER FUNCTION)
25	900366-0	CLEVIS PIN, 1/2" DIA X 2-1/4" LG.
26	900419-0	WASHER, NYLON, 1/2" X 3/4" X 1/16"
27	900573-0	BATTERY
28	900658-0	CAPLUG, 1" X 2" BLACK PLASTIC
29	900991-0	WASHER, NYLON, 3/8" X 3/4" X 1/16"
30	901011-0	COTTER PIN LOCKING RING

510555-5

PARTS MANUAL

TILT CHAIR, 24" ELECTRICAL MODEL NO. 400555-P PARTS LIST

ITEM	PART NO.	DESCRIPTION
31	901017-0	WASHER, FLAT, 1/2" SAE
32	902015-0	WHEEL, 6" DIA
33	902518-0	NUT, 3/8-16, HEX, ESNA
34	902520-0	BOLT, HEX, 3/8-16 X 2-1/2" LG.
35	903150-0	NUT, #6-32 NYLON INSERT
36	903204-0	SCREW, #6-32 X 1" LG. PAN HEAD PHILLIPS
37	903230-0	CIRCUIT BREAKER SWITCH
38	903591-0	ELECTRIC ACTUATOR (TILT FUNCTION)
39	903623-0	SCREW, 1/4-20 X 3/8" LG., FLAT HEAD PHILLIPS, SS
40	903630-0	SCREW 6mm X 10mm PAN HEAD PHILLIPS, SS
41	903633-0	CASTER, TOTAL LOCK
42	903634-0	CASTER, STEER LOCK
43	903641-0	SHOULDER BOLT, 3/8" X 1-1/4" LG.
44	903651-0	PLUG, FINISHING, 1/2" ID BLACK
45	903652-0	PLUG, FINISHING, 1-1/4" ID STEEL
46	903679-0	PLUG, RECTANGULAR TUBE 1/2" X 1-1/2"
47	101365-0	LONG FRICTION SLEEVE
48	101366-0	SHORT FRICTION SLEEVE
49	104306-0	SHAFT, BACK SUPPORT 24" CHAIR
50	102702-0	SHAFT, FRONT FRAME PIVOT
51	102703-0	SHAFT, SEAT / BACK PIVOT
52	102734-0	PINCH SHIELD OUTER LH
53	102735-0	PINCH SHIELD OUTER RH
54	102736-0	PINCH SHIELD INNER LH
55	102737-0	PINCH SHIELD INNER RH
56	102749-0	SHAFT, PINCH SHIELD, 2.062" LG.
57	102760-0	SHAFT, ARM LINK & BACK PIVOT 24"
58	200715-0	WELDMENT, FRONT FRAME 24"
59	105122-0	SPACER, PINCH SHIELD
60	200711-0	WELDMENT, BACK FRAME 24"

510555-6

PARTS MANUAL

TILT CHAIR, 24" ELECTRICAL MODEL NO. 400555-P

PARTS LIST

ITEM	PART NO.	DESCRIPTION
61	200691-0	WELDMENT, ARM LINK LH DUAL GUIDE
62	200692-0	WELDMENT, ARM LINK RH DUAL GUIDE
63	300162-0	ASSEMBLY, SWITCH BOX, LH TILT CHAIR WITH PENDANT
64	300163-0	ASSEMBLY, SWITCH BOX, RH TILT CHAIR
65	300169-0	ASSEMBLY, CABLE, SWITCH TO SWITCH, 24" CHAIR
66	300168-0	ASSEMBLY, CABLE, SWITCH TO BATTERY BOX, TILT CHAIR
67	900051-0	PLUNGER, SOUTHCO
68	900103-0	WASHER, LOCK, #8 INTERNAL TOOTH
69	900107-0	SCREW, #6-32 X 1/4" LG, PAN HEAD PHILLIPS
70	900262-0	BUMPER, RUBBER
71	900282-0	WASHER, NYLON, 1/4" X 3/4" X 1/16"
72	900369-0	BATTERY CHARGER
73	900566-0	SLEEVE, SOUTHCO
74	900609-0	POP RIVET, .125" DIA X .188" LG. ALUMINUM
75	900990-0	SCREW, 1/4-20 X 3/8" LG. BUTTON HEAD SOCKET
76	900992-0	SCREW, #8-32 X 1/4" LG. BUTTON HEAD
77	903600-0	TERMINAL, FEMALE, MINI-FIT JR
78	903601-0	CONNECTOR RECEPTICAL 4 CIRCUIT
79	903627-0	SCREW, 1/4-20 X 3/8" LG. UNDER CUT FLAT HEAD
80	900621-S	POP RIVET, .125" DIA X .375" LG. STAINLESS STEEL
81	903654-0	BEARING, NYLON, DOUBLE FLANGED
82	903667-0	POP RIVET, .125" DIA X .375" LG. ALUMINUM, LARGE FLANGE
83	100164-0	PIN, SPRING GUIDE
84	100170-1	WELDMENT, PAWL, RH
85	100171-1	WELDMENT, PAWL, LH
86	100192-1	RATCHET, LEG ADJUSTMENT
87	100193-1	ASSEMBLY, PAWL, RH
88	100194-1	ASSEMBLY, PAWL, LH
89	102710-0	PIN, PLUNGER, LEG LENGTH ADJUSTMENT
90	102711-0	LEVER, LEG LENGTH ADJUSTMENT

510555-7

PARTS MANUAL

TILT CHAIR, 24" ELECTRICAL MODEL NO. 400555-P

PARTS LIST

ITEM	PART NO.	DESCRIPTION
91	103263-0	PIN, CLUTCH SEAT
92	200712-0	WELDMENT, SEAT FRAME, 24"
93	100915-P	WELDMENT, FOOT PLATE, 24"
94	100906-0	SHAFT, 3/8" DIA X 23-7/8" LG.
95	105093-0	WELDMENT, BASE PLATE, RH
96	105094-0	WELDMENT, BASE PLATE, LH
97	106230-0	HOUSING, PLUNGER
98	200652-0	WELDMENT, FOOT EXTENSION LH OUTER
99	200653-0	WELDMENT, FOOT EXTENSION RH OUTER
100	200677-0	WELDMENT, TIE TUBE, 24"
101	200713-0	WELDMENT, LEG SUPPORT, LH
102	200714-0	WELDMENT, LEG SUPPORT, RH
103	900005-0	CAP, SQUARE, 1"
104	900016-0	NUT, 1/4-20, HEX, ESNA
105	900049-0	DETENT, VALCO
106	900059-0	1/4-20 X 1/4" LG. SOCKET SET SCREW, DOG POINT
107	900070-0	PIN, DOWEL, 3/32" DIA X 1/2" LG.
108	900073-0	SPRING, COMPRESSION
109	900075-0	WASHER, FLAT, .219" X .500" X .049"
110	900088-0	BOLT, HEX, 1/4-20 X 2-1/4" LG.
111	900100-0	TIP, 1/4" ROD CAPLUG
112	900888-0	SCREW, 5/16-24 X 5/16" LG. NYLON TIP
113	901086-0	NUT, 5/8-18, HEX, ESNA
114	903212-0	BOLT, SHOULDER, 3/8" X 5/8" LG.
115	903608-0	1/4-20 X 5/16" LG. SOCKET SET SCREW
116	903609-0	SPRING PIN
117	903678-0	SPRING, COMPRESSION
118	100963-0	SEAT RETAINER PIN
119	100965-0	BRACKET, BACK RETAINING
120	102782-0	WEAR STRIP

510555-8

NOTES